

INDUSTRIAL ROOF

MOUNTING STRUCTURES



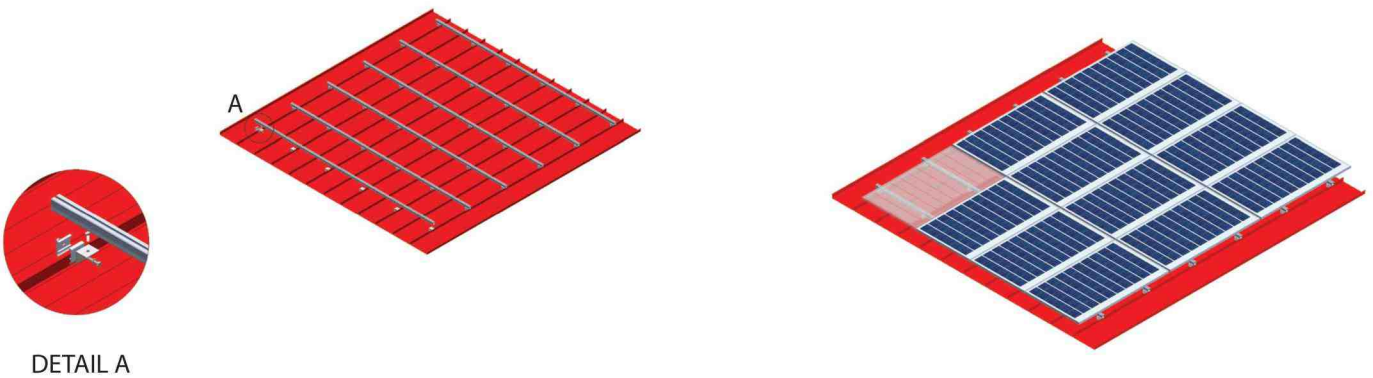
Installation for industrial roofs
with accessibility from
the upper part of the roof

**The Integrated System
for Professional Solutions**

Metal seam roof

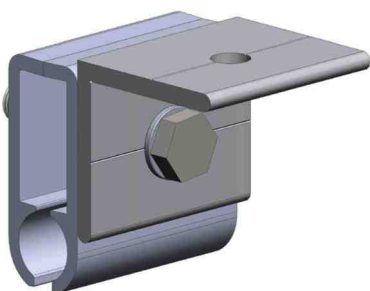
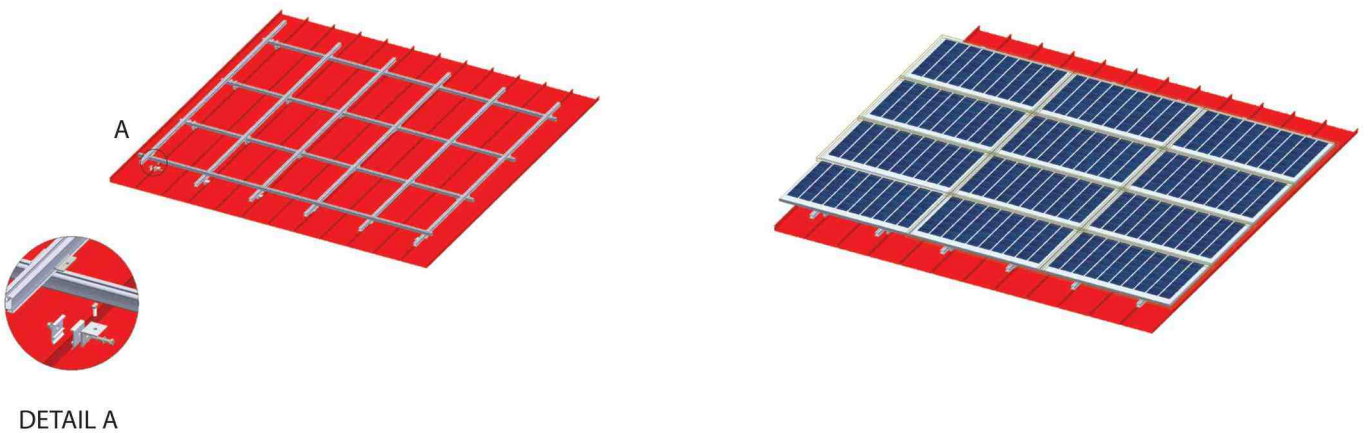
M-IR-800P-71

Clamp for metal seam roof with portrait layout



M-IR-800L-71

Clamp for metal seam roof with landscape layout



Clamp for metal seam roof

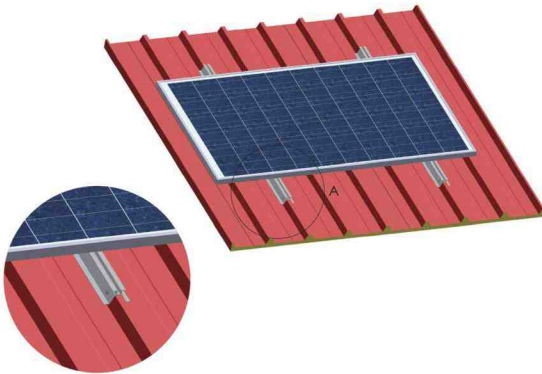
Mounting system specifications

- Mbmax for rail : 0.70 KNm (SL07)
- Anchoring using clamp for metal seam roof – aluminium product
- Portrait or Landscape orientation: Anchoring span ~ 0.8m
- Accessories : aluminum clamp, allen bolt M8 and square nut M8
- The square nut is placed in the channel of the pv rail (from up or the side) and then the clamp and the bolt are placed.
- Fastening torque 13Nm.

Trapezoidal polyurethane sandwich roof panel

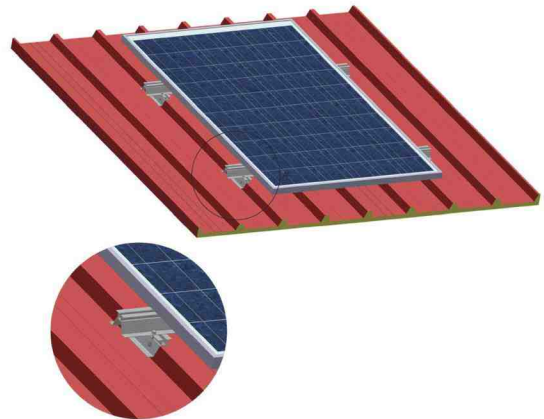
M-IR-800L-64

Landscape orientation



M-IR-800P-64

Portrait orientation



Mounting system specifications

Mbmax for rail : 0.90 KNm (SL64)

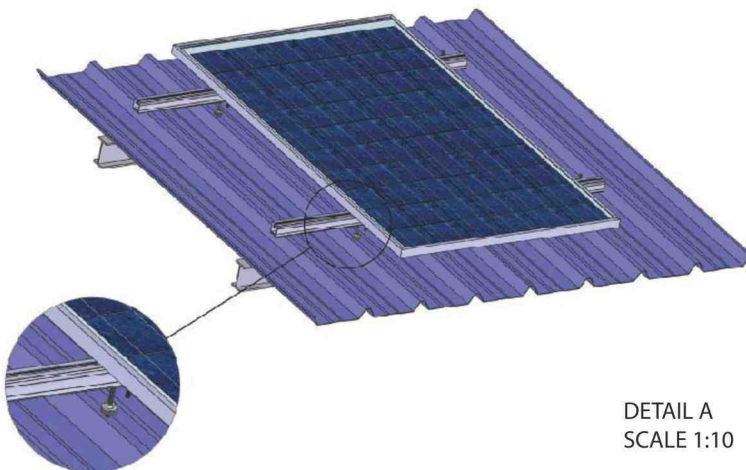
Anchoring through self drilling screws:

Landscape orientation: anchoring by a pair of self – drilling screws per 0.5m

Portrait Orientation : secondary rail anchored by 2 pairs of self – drilling screws on the panel per 1– 1,1m. The main rail anchored by pair of self – drilling screws on the node.

Plain metal sheet roof top – corrugated or flat

M-IR-810



Mounting system specifications

Mbmax for rail : 0.70 KNm (SL07)

Anchoring using threaded hanger bolts (fastener type BZ) fastened to the roof's steel frame

Portrait or Landscape orientation: Hanger bolts per 1– 1,1m